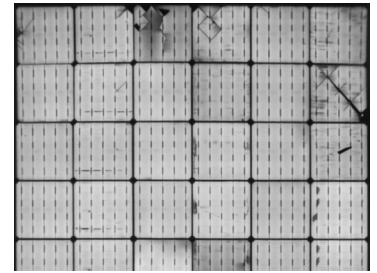


DATASHEET

ECOLAB EL A - EL TESTER



CHARACTERISTICS

- FAST & EASY IMAGE ACQUISITION;
- AUTOMATIC LOAD, UNLOAD AND CONTACTING
- WORKS WITH EVERY SOLAR CELL AVAILABLE;
- BEFORE AND AFTER LAMINATION;
- DARK CURRENT TEST;
- TWO FIXED OPTIMIZED 4MPX NIR CAMERA;
- USABLE AREA: 2300 x 1150 mm;
- ACCURACY: 1PX = 0.55MM
- RESOLUTION FOR A COMPLETE MODULE OF 72 CELLS: 6.6MPX;
- ACQUISITION TIME FOR A COMPLETE MODULE: LESS THEN 20S;
- SQL DATABASE FOR DATA STORAGE;

**AUTO
BEFORE
& AFTER
LAMINATION**

**AUTO
DETECTION
SOFTWARE**

**MAX
20^{SECONDS}
PER
MODULE**

OPTIONALS

**HIGHER RESOLUTION
CAMERA**

ADDITIONAL CAMERAS

Images for illustrative purposes only

TECHNICAL SPECIFICATIONS

MODULE TYPE	Mono-/Poly- crystalline; Thin film; Back-contact; HJT; Bifacial
USABLE AREA	Inline: max 2300 x 1150
MODULE SIZE	minimum 450x450 mm
IMAGING SENSOR	Basler
RESOLUTION	550 - 580 $\mu\text{m}/\text{px}$
	Resolution for a complete module of 72 cells: 6.6 Mpx
CAMERAS	2 NIR camera of 4Mpx
IMAGE CAPTURE TIME	<10 sec
MODULE CONNECTION	Manual
MODULE ORIENTATION	Sunny Side down, Short-Side Leading
MODULE LOADING/UNLOADING	Automatic
CONFIGURATION	Inline
APPLICATION	Before or After Lamination
FILING	Auto numbering/ Auto sorting according to their defects

UTILITY SPECIFICATIONS

ELECTRICAL CHARACTERISTICS	
LINE	1P+N+E
VOLTAGE	230 V
FREQUENCY	50/60 Hz
PEAK POWER	2.2 kW
POWER CONSUMPTION	3 kW
MAX CURRENT	10A
PRE FUSE	5 A
DIMENSIONS	
HEIGHT	1350 mm
LENGHT	2700 mm
WIDTH	1800 mm
CE WEIGHT	950 kg

POWER SUPPLY

MAX POWER	850 W
VOLTAGE	150 V
CURRENT	20 A

* Available also with different voltages, according to criteria of the place of installation. To be defined at order if with implementation of transformers or with modification of the electrical board of the machine.