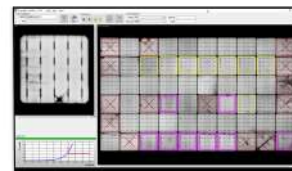


NEURAL NETWORK SOFTWARE FOR AUTOMATIC DETECTION OF DEFECTS



OPTIONAL

CHARACTERISTICS

- FAST & EASY IMAGE ACQUISITION;
- AUTOMATIC LOAD, UNLOAD AND CONTACTING
- WORKS WITH EVERY SOLAR CELL AVAILABLE;
- BEFORE AND AFTER LAMINATION;
- DARK CURRENT TEST;
- 6 FIXED OPTIMIZED 4MPX NIR CAMERA;
- USABLE AREA: 2300 x 1350 mm;
- ACCURACY: 1PX = 0.55MM
- RESOLUTION FOR A COMPLETE MODULE: 24 MPX;
- ACQUISITION TIME FOR A COMPLETE MODULE: LESS THEN 20S;
- SQL DATABASE FOR DATA STORAGE;

**BEFORE
& AFTER
LAMINATION**

**AUTO
DETECTION
SOFTWARE**

UP TO **24MPX**
**FULL IMAGE
RESOLUTION**

OPTIONALS

HIGHER RESOLUTION
CAMERAS

SOFTWARE

Automatic detection of failures

MOTORIZED

Loading & Unloading system

AUTOMATIC

Contact system

Images for illustrative purposes only

ECOPROGETTI Srl - Italy

Via dell'Industria e dell'Artigianato, 22/D, Carmignano di Brenta, 35010 - Padua

Tel. +39 049 7444900 - info@ecoprogetti.com - www.ecoprogetti.com



TECHNICAL SPECIFICATIONS

MODULE TYPE	Mono-/Poly- crystalline PV module; PERC, Bifacial, HJT, Thin film
MODULE SIZE	Max 2300x1350mm, min 450x450 mm (suitable for 60-72 STD Modules)
WORKING AREA	2300x1350mm
MONITOR	42 inches
RESOLUTION	Full work area image resolution: 24Mpx;
IMAGE CONTROL	Software for Automatic detection of failure
TRACEABILITY	Bar code reader included
CAMERAS	n.6 camera of 4Mpx
IMAGE CAPTURE TIME	From 1 to 10 sec per snap
MODULE CONNCECTION	Automatic/Manual
MODULE ORIENTATION	Sunny Side down, Long-Side Leading
MODULE LOADING/UNLOADING	Automatic / Manual
CONFIGURATION	Stand-alone & Inline
APPLICATION	Before or After Lamination
FILING	Auto numbering/ Auto sorting according to their defects

UTILITY SPECIFICATIONS

ELECTRICAL CHARACTERISTICS	
LINE	1P+N+E
VOLTAGE	230 V
FREQUENCY	50/60 Hz
PEAK POWER	2.2 kW
POWER CONSUMPTION	0,5 kW
MAX CURRENT	10A
PRE FUSE	5 A
DIMENSIONS	
HEIGHT	1350 mm
LENGHT	2700 mm
WIDTH	1800 mm
CE WEIGHT	950 kg

POWER SUPPLY

MAX POWER	850 W
VOLTAGE	150 V
CURRENT	20 A

* Available also with different voltages, according to criteria of the place of installation. To be defined at order if with implementation of transformers or with modification of the electrical board of the machine.