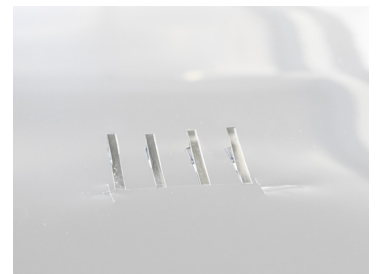


ECOCUT 20 - EVA/BACKSHEET FOIL CUTTER



CHARACTERISTICS

- AUTOMATIC PIECE COUNTER
- EASY&QUICK CHANGE OF THE CUTTING MEASURES
- ROLL SYSTEM TO KEEP STRAIGHT THE SHEETS OF EVA/BACKSHEET
- SPEED & MEASURES ADJUSTABLE FROM TOUCH-SCREEN
- MAX SPOOL DIAMETER: 456mm
- MAX FOIL WIDTH: 1200mm
- CYCLE TIME: <30s
- INTEGRATED WITH TOUCH SCREEN CONTROL PANEL

CAPACITY
120
PANELS/HOUR

PRECISE
EVA/BACKSHEET
INCISION

LESS THAN
30^{SECONDS}
PER
SHEET

OPTIONALS

**AUTOMATIC SOLUTION
AVAILABLE**



**AUTOMATIC FOIL
POSITIONING**



Images for illustrative purposes only



TECHNICAL SPECIFICATIONS

CYCLE TIME (without accounting the spool change)	With incision: <30s ; No incision: <25s
OPERATORS	1 for loading the spool and push start
MAX SPOOL DIAMETER	456mm
MAX FOIL WIDTH	1400mm
MAX FOIL LENGTH	2500mm
MAX WEIGHT SPOOL	200Kg
MODULE ORIENTATION	Long edge forward
SPOOL LOADING&UNLOADING	Manual
PROTECTIONS	Provided with machine
INCISION ON EVA/BACKSHEET	Automatic and customizable
CUSTOMIZABLE SETTINGS	Speed and all measures are adjustable from touch-screen

UTILITY SPECIFICATIONS

ELECTRICAL CHARACTERISTICS	
LINE	3P+N+E
VOLTAGE	400 V
FREQUENCY	50/60 Hz
PEAK POWER	5 kW
POWER CONSUMPTION	1.5 kW
MAX CURRENT	8 A
PRE FUSE	6 A
AIR CHARACTERISTICS	
AIR PRESSURE	6 bar
AIR CONSUMPTION	<1 NL/1'
AIR PEAK FLOW	<1 NL/1'
AIR CONNECTION	1/4"
DIMENSIONS	
HEIGHT	1600 mm
LENGHT	3500 mm
WIDTH	3300 mm
CE WEIGHT	900 kg